

Second Harvest Heartland's mission: End Hunger Through Community Partnerships



2016 Impact



Distributed more than 80 million meals!



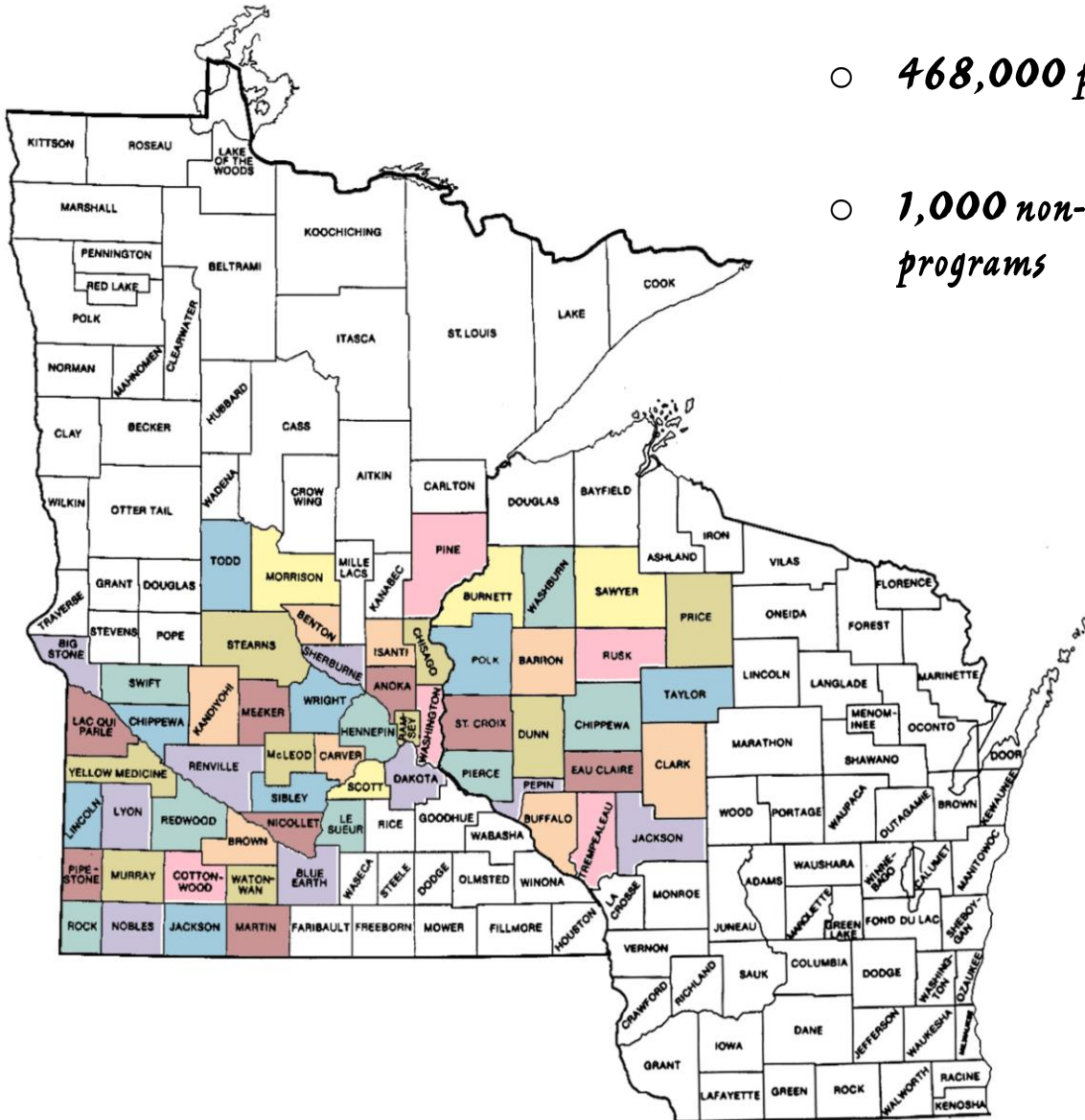
55% of the food we distributed was fresh!



Recruited 28,832 volunteers who donated over 132,333 volunteer hours!



WHO WE SERVE



- 468,000 people served in 59 counties
- 1,000 non-profit member agencies and programs



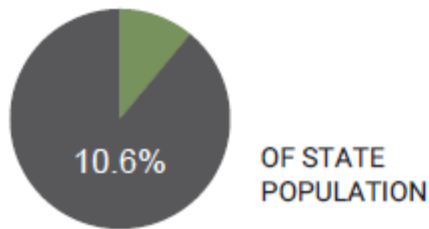
Minnesota



2013 FOOD INSECURITY & FOOD COST IN THE US

STATE FOOD INSECURITY RATE

FOOD INSECURE PEOPLE: 572,760



ESTIMATED PROGRAM ELIGIBILITY AMONG FOOD INSECURE PEOPLE



15.8%

NATIONAL FOOD INSECURITY RATE

Average cost of a meal

State
\$2.74

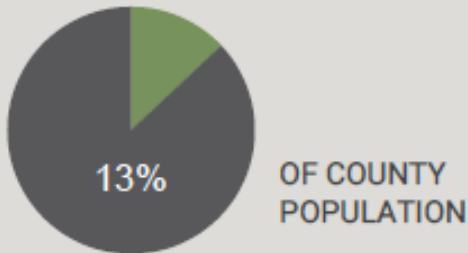
National
\$2.79



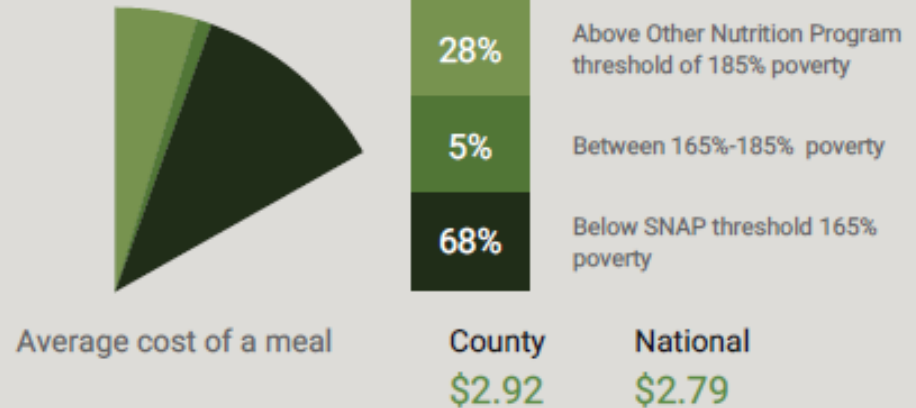
Ramsey County, Minnesota

COUNTY FOOD INSECURITY RATE

FOOD INSECURE PEOPLE:
66,950



ESTIMATED PROGRAM ELIGIBILITY AMONG FOOD INSECURE PEOPLE



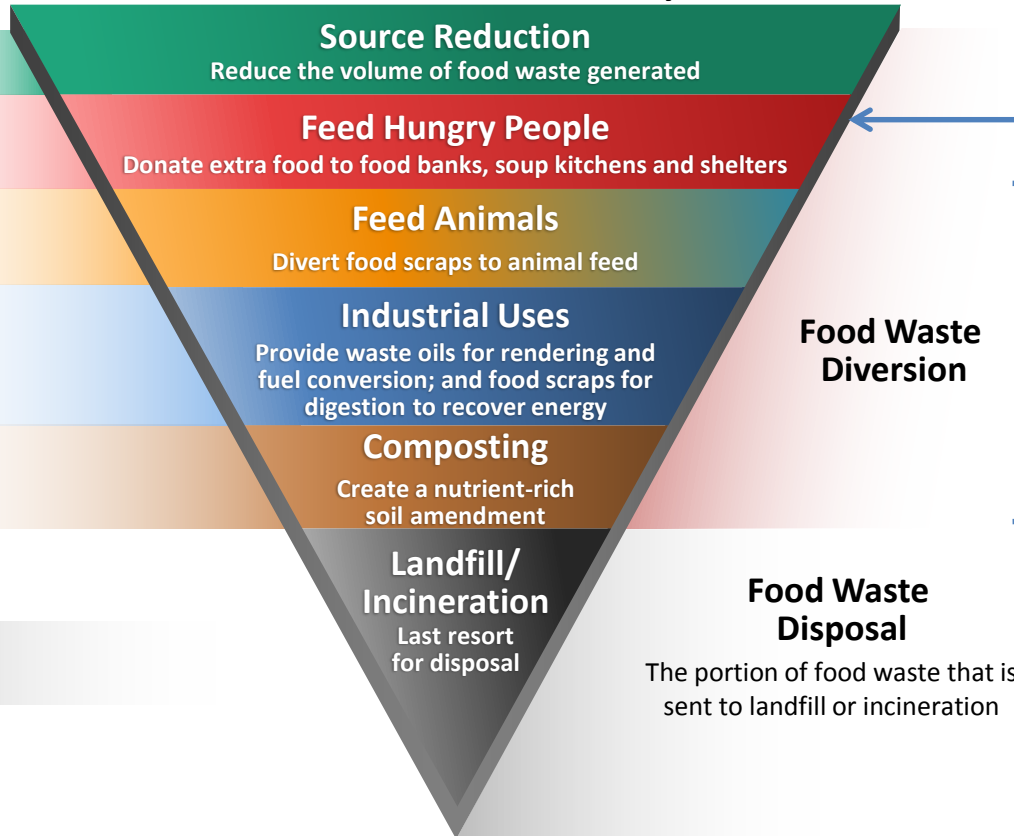
Individuals in Ramsey County were missing **11.7 million meals**. Second Harvest Heartland has delivered **5.8 million meals**, or **40%** of need through our partnerships. **There's more work to do.**

- Feeding America's "Mapping the Meal Gap" (2014)



Opportunities

US EPA Food Waste Hierarchy



SHH, Feeding America network member is the primary avenue for using food waste to feed people

FA and SHH want to ensure that food fit for human consumption goes to people and not animals or compost. Both of which cost businesses money.

Retail Food Rescue - Sources



Millions of pounds
of food go unused
each year in Minnesota



**Second Harvest Heartland's
RETAIL FOOD RESCUE PROGRAM
offers an innovative solution:**

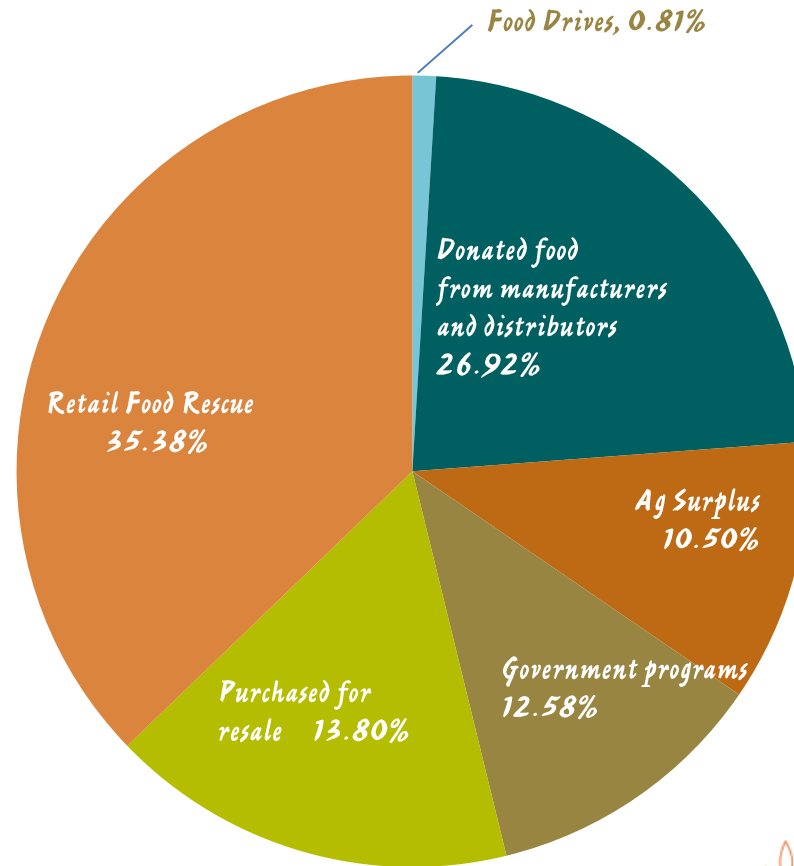
Partner with retail grocers in our communities to divert food being removed from their store shelves to feed hungry people.



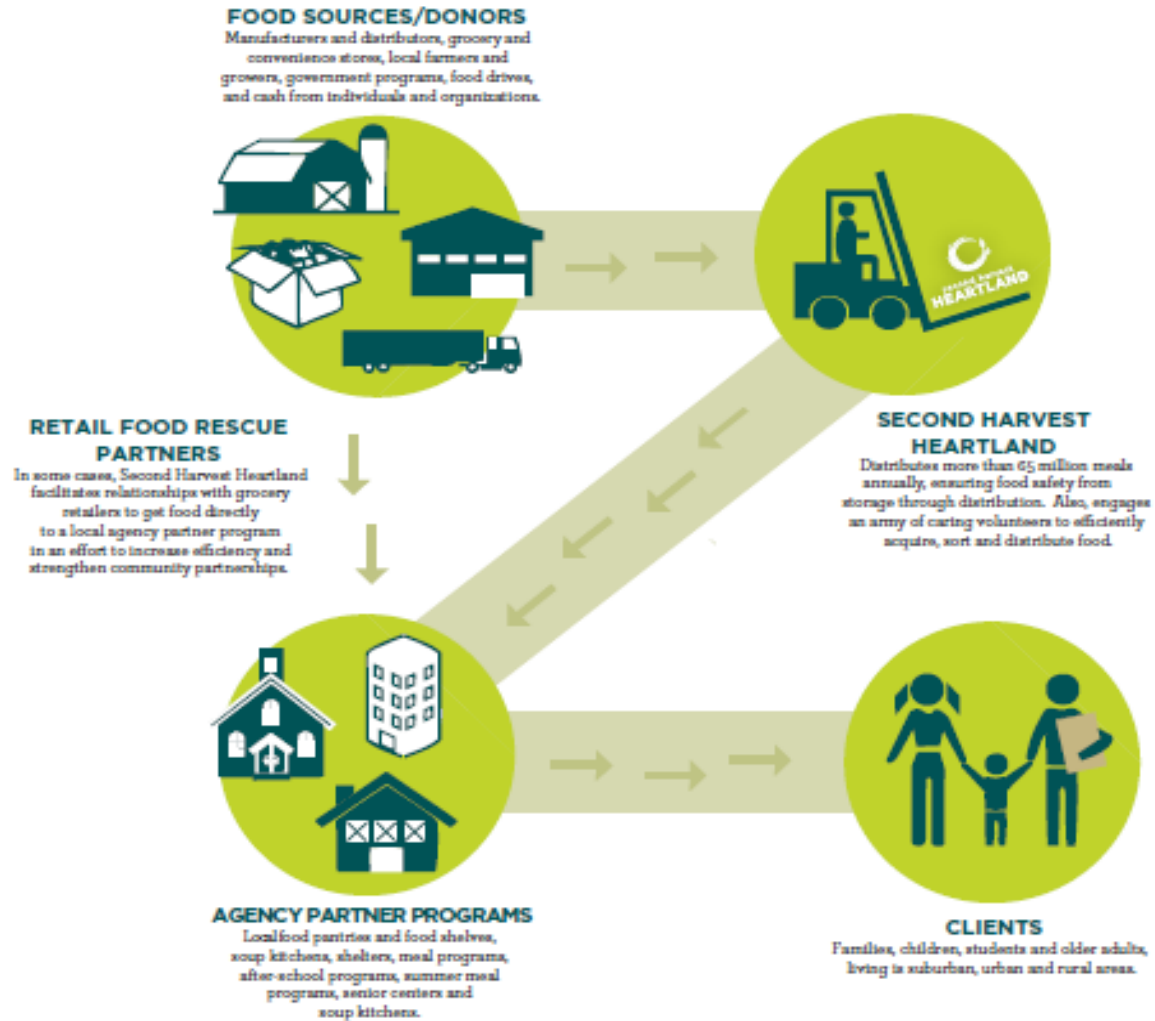
SHH Product Mix

- Food Rescue provided > 35% of SHH's total volume in 2016, **34M pounds**
 - SHH only source of donated meat products
 - Provide balanced meals, ingredients for all cuisines

*Second Harvest Heartland
Food Sources (2016)*



Getting the Food to Our Hungry Neighbors

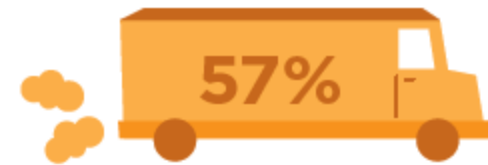


Getting the Food to Our Hungry Neighbors

485 Retail Partners
including grocery retail and
convenience stores



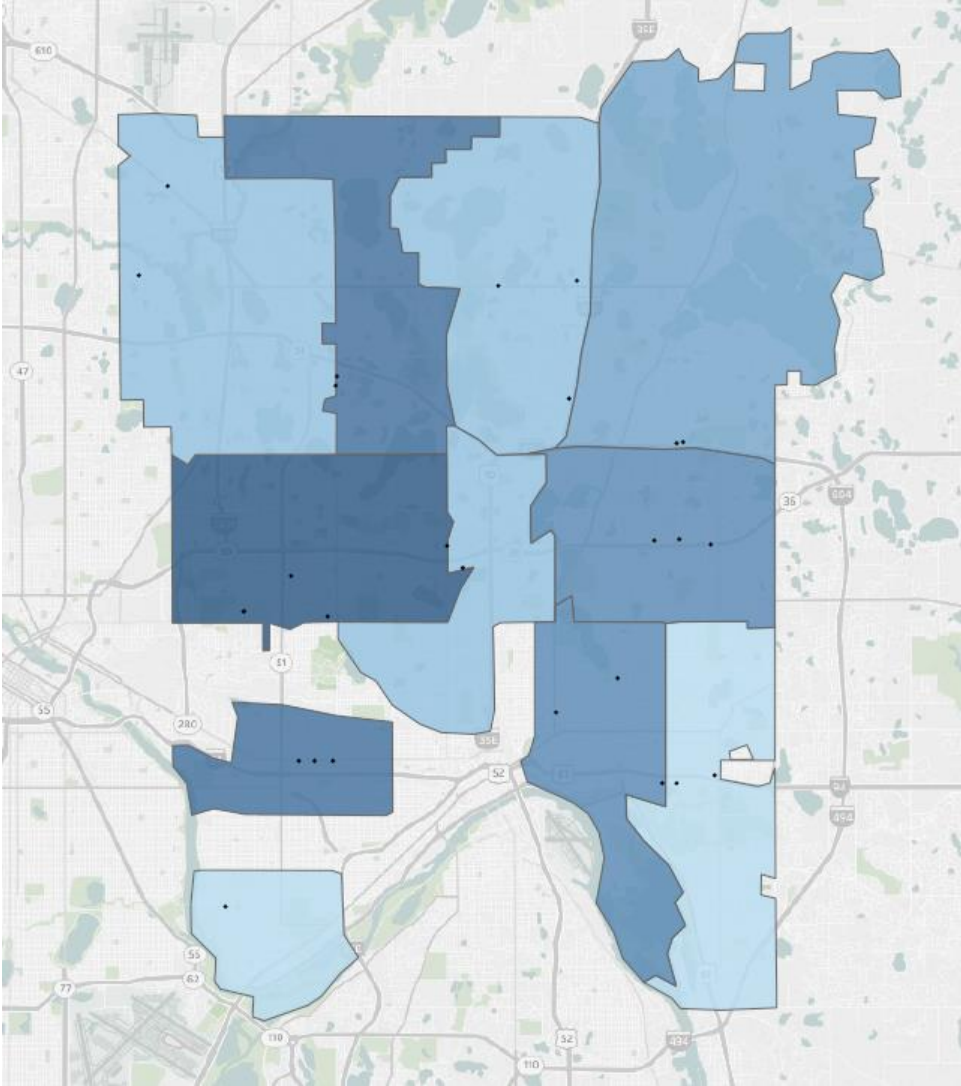
Collected **34 MILLION** Pounds
up from **24 MILLION** in 2012



The percent of donated pounds
picked up *directly* by agency partners



Ramsey County Donations

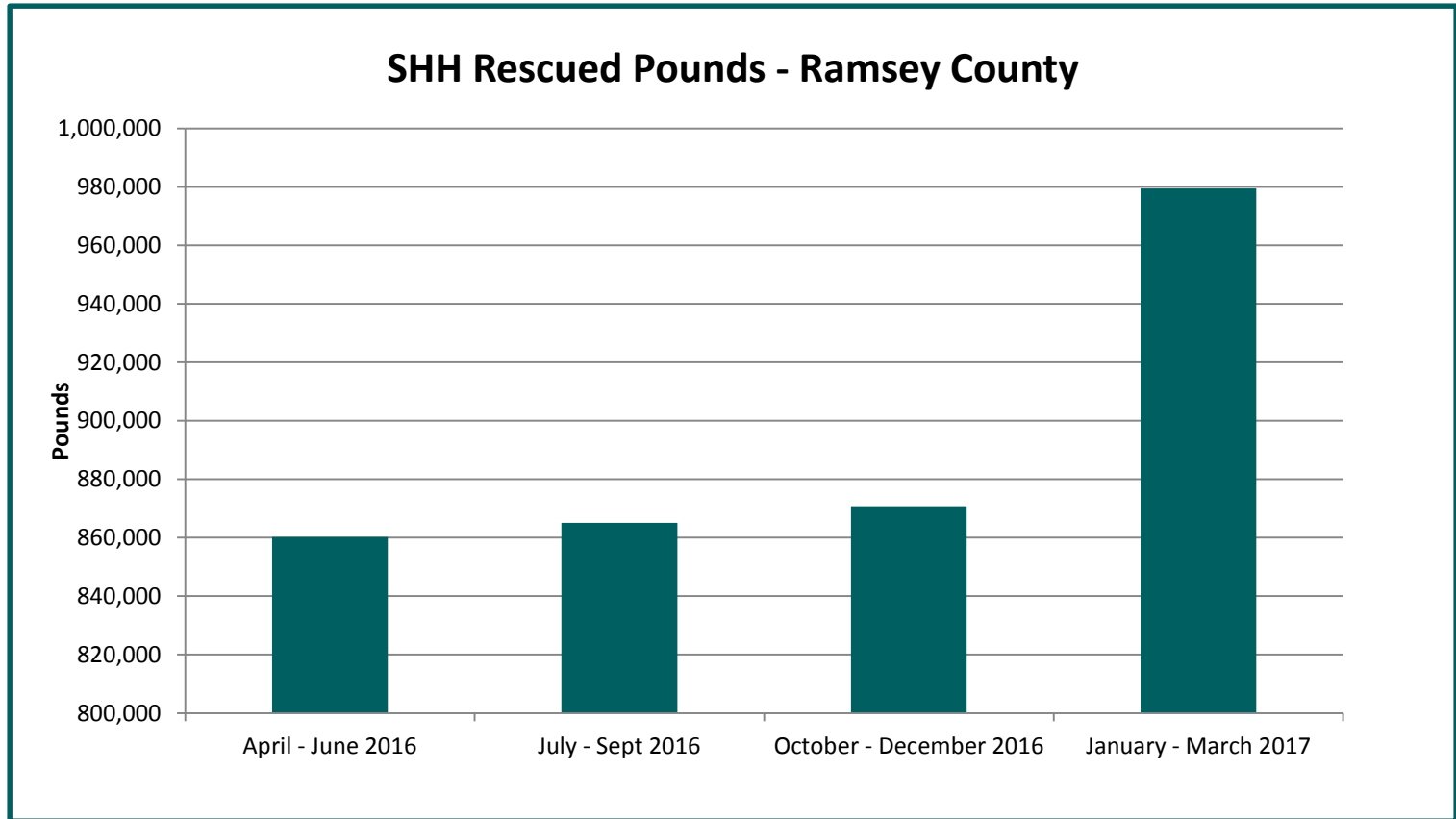


Pounds Received

- 0-67K
- 134K-202K
- 269K-336K
- 336K-403K
- 403K-470K
- 470K-538K



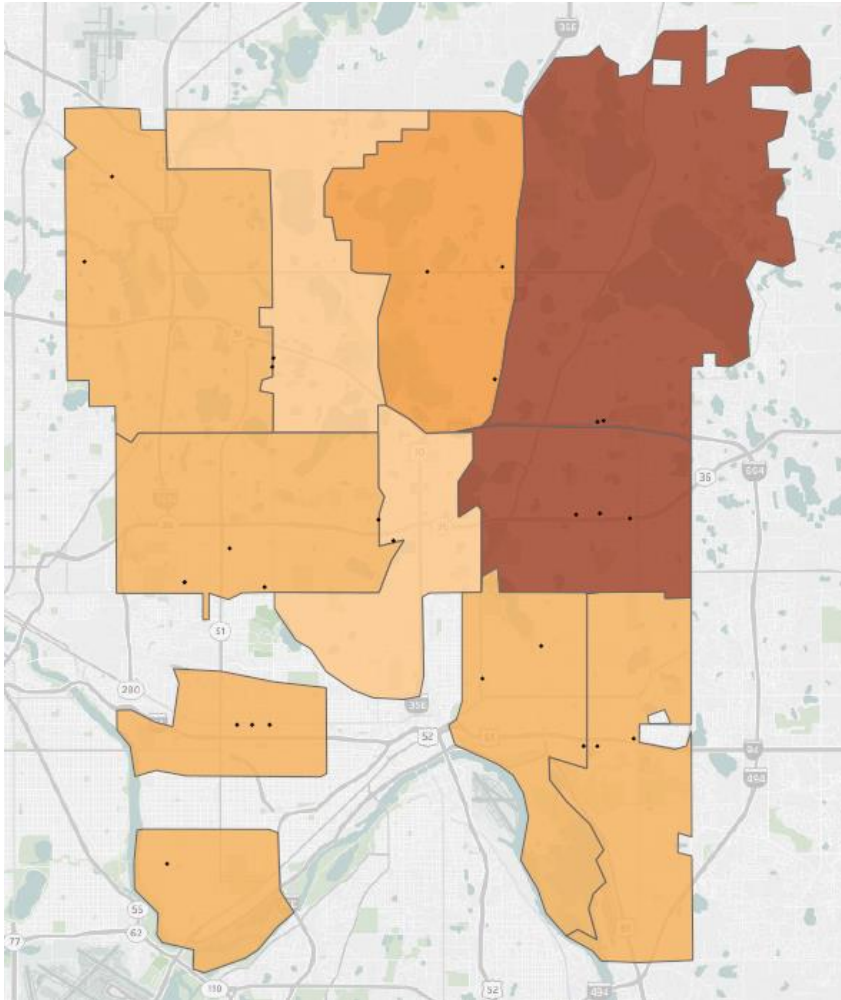
Partnership in Action



3,575,460 million pounds



Ramsey County Opportunity



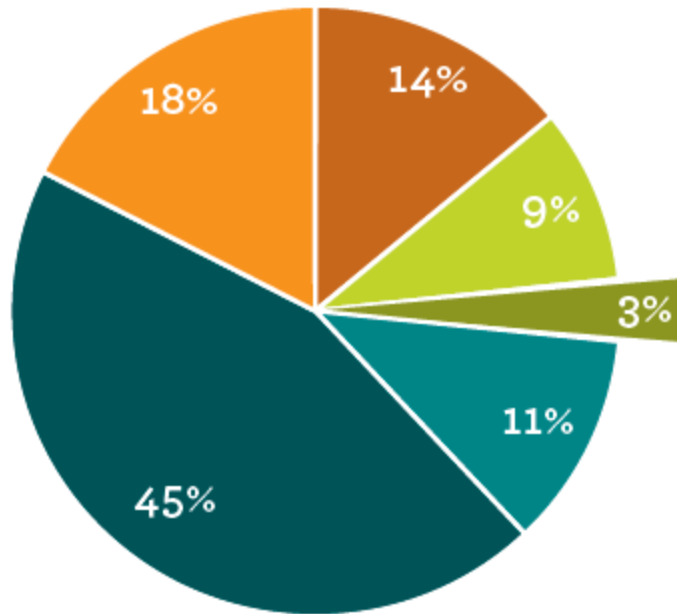
Pounds of Opportunity

- 0-35K
- 35K-70K
- 70K-105K
- 245K-280K

+ 1 million pounds!



Food to Families!



Food Rescue Pounds Breakdown



Source: 2015 annual data



Thank you!

