

Ramsey County Master Plan

Solid Waste Advisory Committee Meeting

April 18, 2017

Welcome

- Introduction
 - Purpose and expectations of the Solid Waste Advisory Committee
 - Orientation to Solid Waste
 - Master Plan Details
 - Logistics
-



Introductions

Name, professional or personal affiliation, answer questions:

- What brought you here?
 - What expectations do you have of the group?
-

Ramsey County Role

- Counties address all aspects – reduce, reuse, recycle, compost, waste-to-energy ultimately reducing reliance on or amount going to landfill.
- Counties are responsible for:
 - Meeting state goals for recycling and trash management
 - Protection of public health and environment



Purpose and expectations of the Solid Waste Advisory Committee

ROLE: The role of Ad Hoc SWAC for this plan revision is to discuss and provide input on solid waste management goals and policy direction, particularly for three focus areas for Ramsey County.

FUNCTION: The SWAC will function as a resource group and sounding board, and will not carry out the extensive and detailed review and comment function of historical advisory committees.

COMPOSITION:

- Residents
- Businesses or business associations
- Private waste industry firms
- Municipalities

Guidelines for group communication

- Everyone gets to have a say
 - Every point of view is okay
 - We will not be making decisions, we are not seeking consensus, we are seeking input!
 - Questions are welcome
 - Define acronyms
 - One speaker at a time so we can keep a record of what is said
-



Solid Waste Orientation



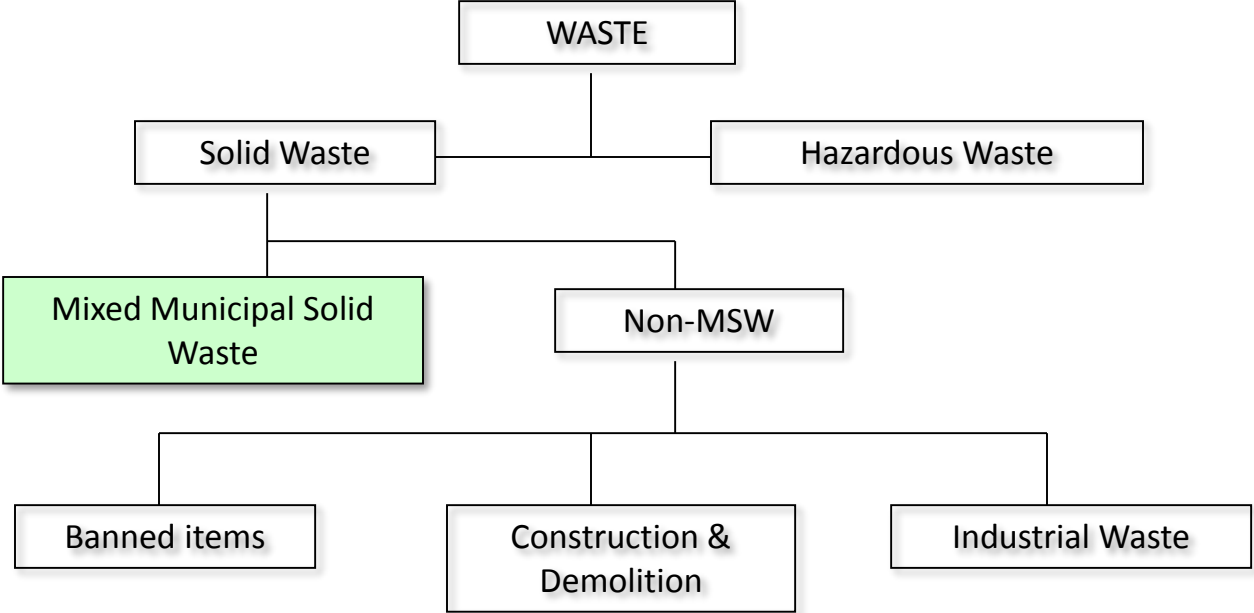
What do we mean waste?

- Garbage, trash, waste, refuse, rubbish, solid waste – it's all the same with a different name!
 - Garbage comes from many sources and activities, both at home and at work.
 - What are the different types of garbage and where does it go?
-

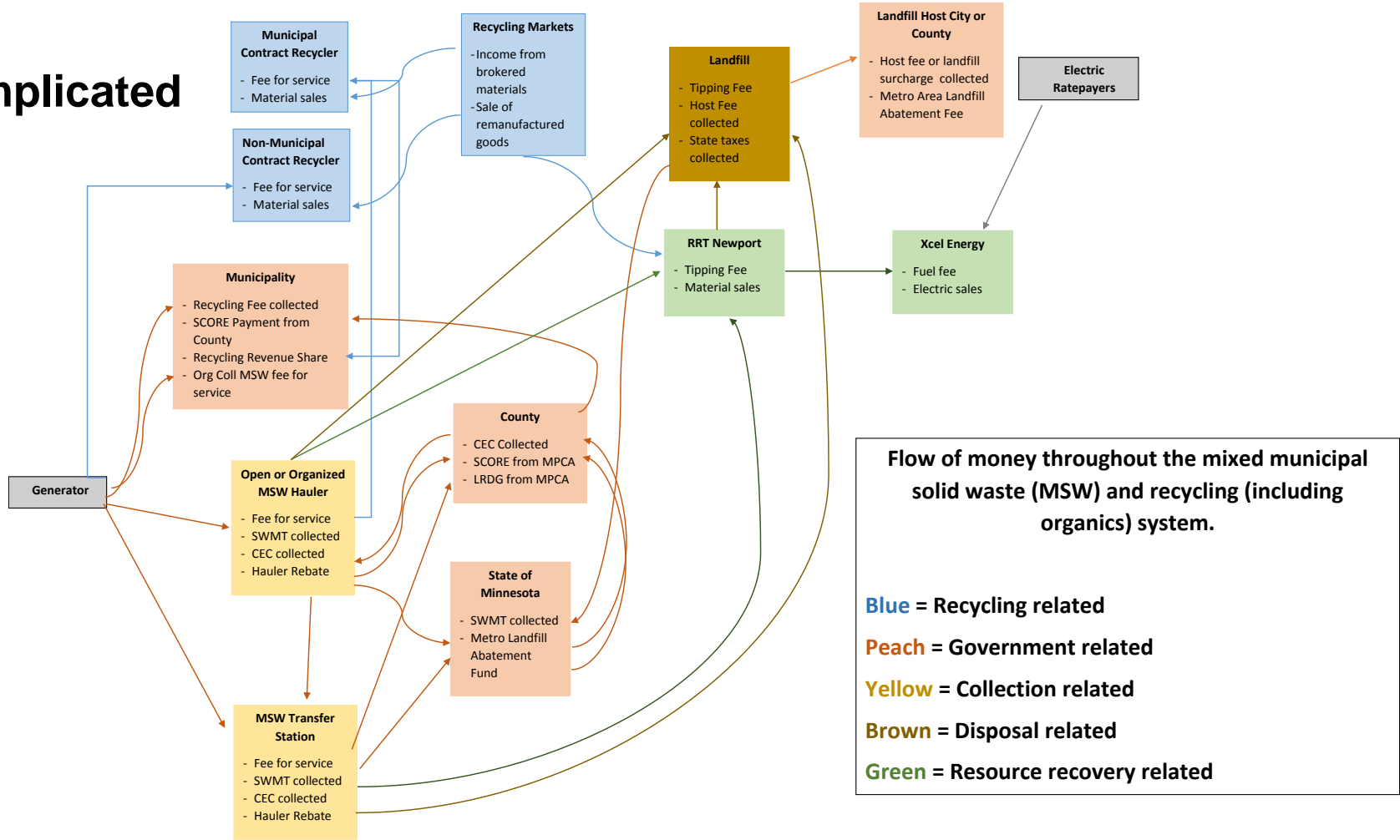
Five Key Points

1. Waste is complex
 2. An effective and sound waste management system is working in our County.
 3. Program evaluation is an important tool: the system is accountable.
 4. Reducing risk to health and the environment is a key element of the waste management system.
 5. The waste management system is operated by a combination of private sector and public sector participants.
-

Waste in Minnesota



It's Complicated



Garbage Facts

- We keep creating more garbage. Each person produces 6 pounds of garbage and recyclables each day at home, work or school.
- There are many players involved – residents, businesses, schools, ...and everyone that produces waste.





Economics of Trash

- Collection costs (picking it up) are 2/3 of your trash bill – 1/3 is the cost of handling the trash
- Recovering materials and energy from trash is more expensive than putting it into a landfill
 - Historically, subsidies are needed to provide an incentive for haulers to bring trash to the R&E Center
- Recycling at home and at businesses is the best value – but not everything can or will be recycled

Garbage is classified into a few basic categories, defined in Minnesota law:



- *Residential* – from homes
- *Commercial* – from businesses
- *Industrial* – from manufacturing
- *Construction & Demolition* – from all of the above

Municipal solid waste, industrial waste, construction waste, and demolition waste are all defined in state and federal regulations.

Ramsey County's "Integrated Solid Waste System"

- **Reduction**: primarily through education, technical assistance, economic incentives
 - Separate management of **problem wastes**
 - **Recycling**: residential & commercial
 - **Composting**: yard waste, organic waste
 - **Resource Recovery**: waste-to-energy
 - **Land disposal**: landfills
-

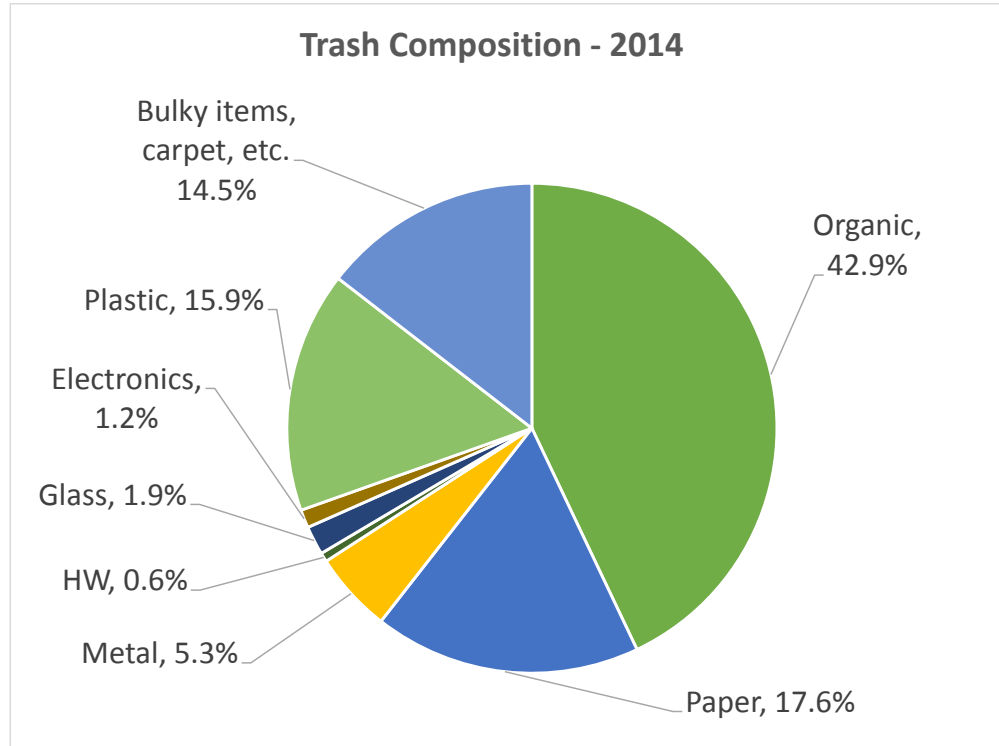
Where Waste Goes Now



Already a successful system

- **86%** of waste diverted
- **51%** of trash is recycled
- **38%** becomes electricity
- Opportunities to reduce, reuse, recycle
- Hazardous wastes properly handled





Opportunities to capture more

Policy Direction from the State



- Stated Goals
 - Reducing risk to health and environment
 - “Abate” landfills
 - A hierarchy of preferred technologies
 - An Integrated system
- Strong focus on Mixed municipal solid waste



Household Hazardous Waste

- Permanent program since 1991
- Year-round sites with seasonal satellite sites
- Operated by contractor
- Separate collection opportunities exist for medicine collection with County Sherriff's.



Electronics

- Electronics are increasingly being recycled.
 - Product stewardship approach to electronics recycling: collection provided for by private sector.
 - Many locations for recycling exist.
 - Cost for recycling varies
-

Hazardous Waste (HW) Management

- Licensing
 - 1,800 HW Generators (aka businesses and institutions producing HW)
 - 14 HW Facilities
 - 8 Solid Waste Facilities
- Conduct over 1,500 inspections and 25 training sessions
- Cradle to Grave Management
- Proper management of 5.8M gallons of HW



Pre-Demo Program

- Promote deconstruction/building material salvage and recycling
- All municipalities fully engaged
 - Notify Ramsey County when demolition permits are issued
 - Consult with Ramsey County on needed technical assistance
- Reduce toxicity of demolition waste. Assure proper management of appliances, HHW/HW, electronics, asbestos.





Reduction and Reuse

- You can't measure it.
 - Outreach efforts have focused on education and technical assistance (Fix-it Clinics).
 - Policy efforts have focused on product stewardship.
 - Strong private sector involvement (Goodwill, garage sales, consignment stores, i.e.)
-



Recycling

- Collected from residents and businesses. Metals extracted from trash at R&E Center.
- Many types of materials recovered.
- Recycling rates have not changed much in 10+ years.

Recycling services

- *For Residents:* Curbside collection services arranged by all municipalities except Mounds View and Saint Anthony (open cities).
- *For Businesses:* Businesses are responsible for arranging recycling services and can be served by one or more vendor.
- Recyclables collected are separated at local recycling facilities.



Recycling Important Points

- Recycling is sensitive to the price of garbage disposal: the cheaper it is to dispose of garbage, the less recycling occurs.
 - Materials to be recycled are changing (i.e. light weighting of plastics, reduced newspapers).
 - Most recycling tonnages comes from commercial sources.
 - Most residents and businesses self identify as already recycling all that they can.
-

Yard Waste

- Banned from trash
- Includes leaves/grass and tree waste
- Ramsey County has 7 yard waste sites
 - Open since Mid-1980's
 - Communities selected location for sites
 - Open year round and free for residents





Organics options for residents

- Reduce food waste
- Home (Backyard) composting
- Drop-off compost at Ramsey County Yard Waste sites or other compost drop-off locations
- Currently there are no municipalities offering curbside organics collection although several of cities have included the option in its recycling contracts.

Organics options for businesses



- Reduce food waste
- Contract for service
 - Food-to-people donations
 - Food-to-hogs
 - Composting
 - Separately collected in cart or in a durable compostable bag.
- Service reliability has been a problem.
- Cost of compostable bags and products, if needed, can be a barrier.

Items Banned for MSW or Landfills

- Cathode Ray Tubes (115A.9565)
 - Major Appliances (115A.9561)
 - Fluorescent Lamps/bulbs (115A.932)
 - Yard Waste, brush (115A.931)
 - Certain dry cell batteries (115A.9155)
 - Rechargeable batteries (115A.9157)
 - Lead acid batteries (115A.915)
 - Mercury containing devices (115A.9132)
 - Telephone directories (115a.915)
 - Motor vehicle fluids and filters (115A.916)
-



Trash not recycled or separately managed

- Managing Trash
 - ~80,000 tons to landfill
 - ~320,000 tons to R&E Center
- Designation to begin on Jan 1, 2018 will require all trash to be delivered to the R&E Center.



Trash Collection Services

- Provided by private haulers
- Organized vs. Open Collection (Residents)
 - 5 municipalities have organized residential garbage collection
- 100+ licensed garbage haulers in Ramsey County
 - Very competitive
 - Rates are set by contract cities
 - Otherwise rates are not regulated



Resource Recovery



- Recycling & Energy Center is owned by the Ramsey/Washington Recycling & Energy Board.
 - Shreds trash to produce a value added fuel which is shipped to two power plants to generate electricity.
- R&E Center is located in Newport, MN
- Metals are extracted from the trash for recycling



Landfill Operations

- Landfills are difficult and expensive to site
 - Landfills are relatively cheaper to operate, in the short term
 - Landfill emissions affect air and water
-

Summary

- There is a lot of waste out there, and it needs to be managed.
- Proper solid waste management is necessary for the protection of public health and the environment.
- The State has, to date, emphasized protection in its laws.
- The region has created a successful integrated waste management system.



Future Thinking

- Seeking to improve a robust system
- Critical shift in thinking, policy and new technologies to:
 - Protect the environment;
 - Ensure success of higher recycling goals;
 - Keep value of resources local;
 - Support East Metro economic prosperity goals;
 - Cost effective.



TRASH



ENERGY



NEW GOODS



COMPOST

- Solid and Hazardous waste is in the public health department
 - Why? Ramsey County believes in the public health approach to waste management.
 - Focus on prevention and relationships
 - Continual engagement to change behaviors
 - Focus on upstream behavior change
-



WELL-BEING



PROSPERITY



OPPORTUNITY



ACCOUNTABILITY

Blending county goals with recycling goals

Ramsey County Board Goals

- 1) Strengthen individual, family and community health, safety and well-being
 - 2) Cultivate economic prosperity and invest in neighborhoods with concentrated financial poverty
 - 3) Enhance access to opportunity and mobility for all residents and business
 - 4) Model fiscal accountability, transparency and strategic investments
-



Ramsey County is unique.

- Small in size
- Fully developed
- Racially diverse
- Economically diverse populations
- Urban and sub-urban
- ~ 10% of states population

- Population: 538,000
- Race
 - 64% White (81%)
 - 14% Asian
 - 12% Black/African American
 - 7% Hispanic
 - 1% Native American
 - 3% More than one race
- Housing Units: 218,000
 - Owner Occupied: 59% (72%)
- Median Income: \$55,460
(\$60,828)
- Persons in poverty: 17% (12%)
- Language:
 - 126 languages in Saint Paul Public Schools
 - Language other than English at home: 21% (11%)
- Number of businesses: 47,210

The image shows the cover of a report titled "Metropolitan Solid Waste Management Policy Plan 2016 - 2036". The cover features the logo of the Minnesota Pollution Control Agency in the top left corner. The title is prominently displayed in the center-left. To the right of the title are three circular images: the top one shows a refrigerator with a sign that says "Eat me first!" and "SOURCE REDUCTION" below it; the middle one shows hands working on a circuit board with "REPAIR OR REUSE" below it; and the bottom one shows a recycling bin. The entire cover is enclosed in a dashed-line border.

Minnesota Pollution Control Agency

Metropolitan
Solid Waste
Management
Policy Plan
2016 – 2036

Eat me first!
SOURCE REDUCTION

REPAIR OR REUSE

Solid Waste Master Plan Details

Solid Waste Master Plan

- Required by State Law
- Revised every six years, with a 20-year horizon
- Specific goals and mandates by MPCA
- Triggered by revision of MPCA Policy Plan (Published April 7, 2017)

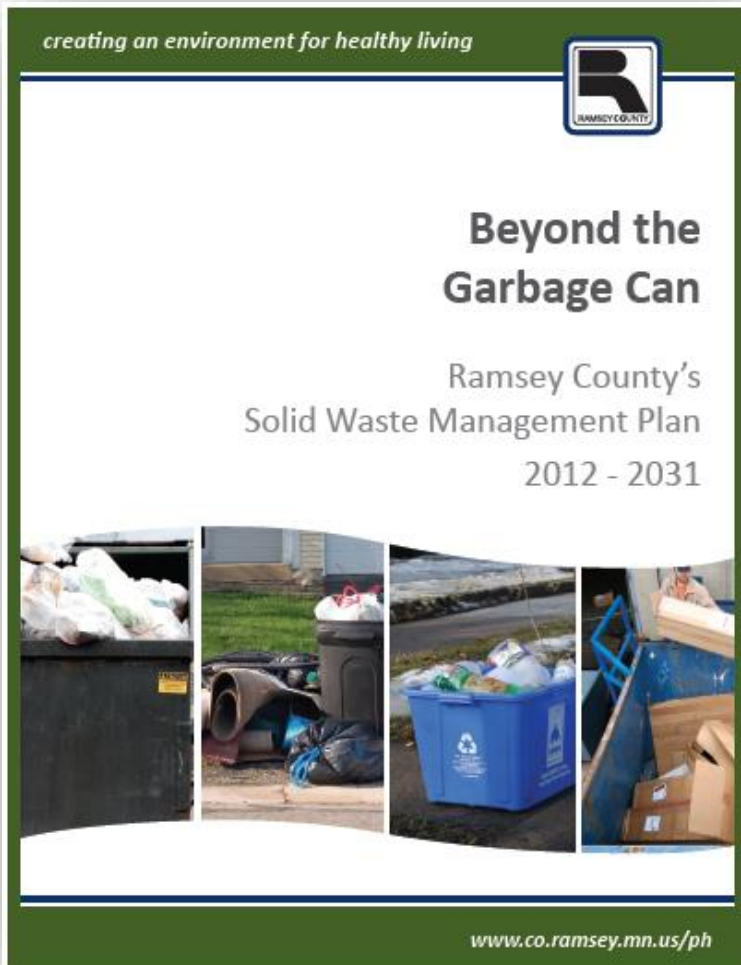
Policy Plan can be found at:

<https://www.pca.state.mn.us/waste/metropolitan-solid-waste-management-policy-plan>



Master Plan Approval - January 2018

We have 9 months from the issuance of the MPCA Policy Plan to prepare the Ramsey County Master Plan. Although the clock just started, we began preparation work months ago.



Current Plan

- Regional and local component
- Policies – Guide county actions
- Strategies – based on meeting or exceeding state objectives, based on
 - Sound science,
 - Good judgement,
 - Best practices,
 - In partnership with others.

Did we achieve the goals in the Master Plan?

Management Method	Ramsey County 2015	Metropolitan Area MSW Management Objectives	
		2015	2020
Source Reduction	Unknown	1-2%	2-4%
Recycling	46.7%	45-48%	47-51%
Organics Recovery	6.9%	3-6%	4-8%
Resource Recovery	34.7%	32-34%	32-33%
Landfill	11.7%	20%	17%

2017 Master Plan Timeline

- *Through June:* Gather input from Solid Waste Advisory Committee and public.
 - Early draft sent to SWAC and key stakeholders for comment
- *July:* Public draft plan available for comment.
- *September:* Plan presented to Ramsey County Board for approval.

www.ramseyrecycles.com/masterplan



1. Build on successful, integrated system
2. Increased focus on:
 - Accountability
 - Performance driven incentives
 - Results
3. 75% recycling goal by 2030
4. New areas of focus
 - Reuse
 - Food waste
 - Construction and Demolition



Guiding Principles

1. Plan for a 20-30 year horizon;
2. Build on the current system and allow changes in processing to emerge over time;
3. Assure flexibility;
4. Manage risks; and
5. Pivot the view from “waste” to “resources” to add value to the local economy and environment.





Environmental Factors

- Conservation of Resources
 - Materials
 - Energy
- Air Quality
- Greenhouse Gas Emissions
- Groundwater Protection

Equity Factors

- Adding to Environmental Justice considerations to include:
 - Health Equity
 - Racial Equity
 - Economic Equity
 - Cultural Equity
- Moving past just end disposal to opportunities, education, resources, programs, i.e.



Surveys

We would like to get your understanding of the topic before we meet and then follow up to see if your opinion or understanding of the topic changed since our presentation and discussion

- Pre-Survey: BEFORE attending the scheduled meeting.
- Post-Survey: 48 hours after attending the meeting.

Each survey will take less than 10 minutes to complete.

SWAC Compensation Request Procedure

- Eligible for \$5 per meeting
- To pay we need you to fill out a:
 - Ramsey County Claim
 - W-9
 - If you are set up with the vendor file, we don't need a W-9

Forms can we left here or submitted to:
rachel.frank@co.ramsey.mn.us

Next meetings

All meetings from 5:15 p.m. to 7:30 p.m.

- May 2: Food Waste
 - May 16: Reduction
 - May 30: Construction & Demolition
-

Questions - Concerns?

