

PROCESS

Saint Paul – Ramsey County Public Health (SPRCPH) developed a comprehensive Community Health Assessment (CHA), consisting of both qualitative and quantitative components over a year-long process. Throughout the process, there was an effort to involve the public and others representing multiple sectors of the community.

CENTER FOR COMMUNITY HEALTH

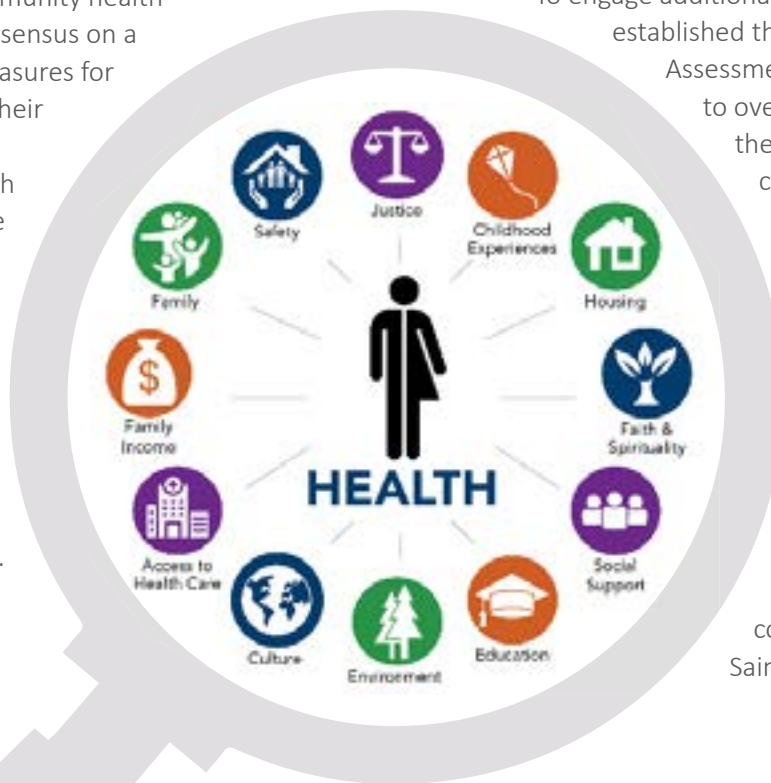
Since the last community health assessment in 2013, SPRCPH has been an active member of the metro-wide Center for Community Health (CCH), which includes public health, hospitals, health care systems and health plan representatives. Through participation with CCH-Assessment Alignment Committee, this CHA reflects insights and shared data from peer organizations across the metro region. As part of this work, the CCH Assessment Alignment Committee prioritized community health indicators and came to consensus on a core list of quantitative measures for all members to include in their individual CHA documents. Data reports (including both quantitative and qualitative data) were shared between the group members. In addition, the group analyzed their experiences (challenges and successes) to come up with lessons learned about the community health assessment process.

FORCES OF CHANGE ASSESSMENT

In a collaborative effort with the Center for Community Health, the group conducted a “Forces of Change” workshop, which included participants with diverse experience and expertise representing sectors such as government, community organizations, health care, business and education. The event facilitated a community dialogue to discuss and identify factors that influence health in our local communities and region. Participants explored questions such as “What is occurring that might affect the health of our community?” and “What specific threats or opportunities are present?” See the appendix for a summary of the results.

COMMUNITY HEALTH ASSESSMENT PARTNERSHIP

To engage additional stakeholders, SPRCPH established the Community Health Assessment Partnership (CHAP) to oversee the development of the CHA. CHAP is made up of community representatives from the following sectors: Corrections, County Attorney’s Office, Employment & Training, Libraries, Public Health, Parks & Recreation, Social Services, Financial Assistance, and the Community Health Services Advisory Committee (residents of Ramsey County appointed by county commissioners and the city of Saint Paul mayor).



PROCESS

COMMUNITY HEALTH ASSESSMENT RESEARCH TEAM

Another part of the process was that select SPRCPH staff were trained to serve on a Community Health Assessment Research Team (CHART). This group met monthly and collected/analyzed data from many sources including the CHAP, community sector representatives, topic experts, and sources such as U.S. Census, Centers for Disease Control, the Minnesota Department of Health, the Metropolitan Council, the MN State Demographer, the Minnesota Student Survey, and reports produced by hospital and health care systems. In addition to a description of the community and demographics, the Ramsey County Community Health Assessment includes analysis on over 100 indicators, including topics related to: the health care system, health-related quality of life, individual behavior, mortality, physical environment, and the social environment.

DATA AND TREND ANALYSIS

The Data and Trend Analysis section of the CHA was guided and created by work of the Center for Community Health, the Forces of Change workshop, the Community Health Assessment Partnership and the Community Health Assessment Research Team (all described above). These groups in various capacities helped to:

- select the data indicators to include;
- consult a multitude of scientific data sources;
- collect and analyze the data;
- vet the information with experts; and
- synthesize the information into concise fact sheets.

COMMUNITY ENGAGEMENT

Ramsey County staff connected with community residents in existing gathering spaces, meetings, and cultural events. More than 2,100 residents shared insights at over 60 community locations. The process was designed to be a face-to-face conversation. Residents entered responses into a paper survey, or staff were available to transcribe responses. To address potential language barriers, multi-lingual staff engaged residents in their primary language, including Hmong, Karen, Somali, and Spanish. The survey form asked six questions plus demographics: What helps you stay healthy? and What keeps you from being healthy? for individual, family, and community health. Locations included non-profit partners, libraries, schools and colleges, community centers, apartment buildings, food shelves, and more. See the Community Engagement section for a full description of the process and results.

DISSEMINATION OF THE COMMUNITY HEALTH ASSESSMENT

The 2018 Ramsey County Community Health Assessment is shared with the community and organizations via the SPRCPH website, community groups, and the GovDelivery email distribution list. It will serve as a foundation for the department's strategic planning and community health improvement work.